

## GAS BRATT PAN MANUAL TILTING 80 LT - DUPLEX TANK

Project: .....  
Rev.: .....  
Zone: .....  
Location: .....



CODE  
CR1018189

MODEL  
Q90BR/G80

SERIE  
QUEEN 9

### GENERAL FEATURES

- AISI 304 stainless-steel bases and worktops, Scotch-Brite finish
- Depth of 900 mm for high power and performance
- Catalogue offers more than 350 standard models
- Worktop, base cabinet, base cabinet with doors and oven versions
- 20/10 worktop thickness
- Twin-piece knobs prevent infiltration of dirt and have an IPX5 water ingress protection rating
- Gas ranges having burners with various configurations and power ratings: 3.5 kW - 5.7 kW, 7 kW and 10 kW. Double-ring burners for 7 and 10 kW models
- Wide range of accessories

The knobs offer optimum grip and help the chef to have the setting controls right under his eyes. Special attention has also been paid to the knob bezel that has been expertly designed to avoid penetration of liquids and/or dirt. Thanks to the IPX5 water jet ingress protection rating, awarded after passing specific tests, knobs and knob bezels can be washed at the end of the working day without affecting performance or safety.



### TECHNICAL DETAILS

- GAS  
MANUAL TILTING  
GAS BRATT PAN MANUAL TILTING 80 LT - DUPLEX TANK
- Water filled via solenoid valve
  - Self-balanced lid with double steel wall
  - Safety device interrupting power supply when tub is lifted
  - Adjustable temperature from 100 to 280°C.
  - Stable flame burner;
  - Electric ignition
  - Thermocouple safety valve

# GAS BRATT PAN MANUAL TILTING 80 LT - DUPLEX TANK



CODE  
CR1018189

MODEL  
Q90BR/G80

SERIE  
QUEEN 9

## TECHNICAL INFORMATION

SPECIFICATIONS	DATA
CODE	CR1018189
DEFINITION	Q90BR/G80 BRASIERA GAS M80 DUPLEX
COMMERCIAL LINE	QUEEN
SUPPLY	MISTA
WIDTH	800 MM
DEPTH	900 MM
HEIGHT	870 MM
NET WEIGHT	124,800
VOLUME	0,626 M3
PACKAGING LENGTH	860,000
PACKAGING WIDTH	1020,000
PACKAGING HEIGHT	1150,000
PACKAGING VOLUME	1,010
PACKAGING GROSS WEIGHT	140,000
POWER SUPPLY VOLTAGE STANDARD	220-240V 1N
FREQUENCY	50 Hz
ELECTRIC POWER	0,015 KW
GAS POWER (G30/30 MBAR)	20,00 KW
GAS POWER (G25/25 MBAR)	19,00 KW
IPX PROTECTION	IPX5
CERTIFIED MODEL	Q90BR/G80
CERTIFICATION NUMBER	CE-0085BT0250
CERTIFICATION BODY	0085

## GAS BRATT PAN MANUAL TILTING 80 LT - DUPLEX TANK

CODE CR1018189	MODEL Q90BR/G80	SERIE QUEEN 9
-------------------	--------------------	------------------

### ACCESSORIESES

CODE	MODEL	DESCRIPTION
CR0592770	ZA40	FRONT PLINTH
CR0982789	ZL90	SIDE PLINTH SERIE 900
MA97432000	NXR	SET OF WHEELS NXR
MA97433000	NXRI	SET OF WHEELS INOX NXRI
CR1015369	QCH20	DIRECTABLE WATER FLUE
CR0592869	CR0592869	4 PIEDI X INSTALL.SU ZOCCOLO DI CEMENTO
CR1015339	QPT	N. 4 PIEDINI IN ACCIAIO INOX PER INSTALLAZIONE SU PIANI
CR0592879	CR0592879	KIT ANTI RIBALTAMENTO 2 PIEDI X N900
CR0592399	NXTVT1	KIT PANNELLI X BASE TECN.1 FRONTE NXTVT1
CR0592409	NXTVT2	KIT PANNELLI X BASE TECN.2 FRONTI NXTVT2
CR1018879	Q90FTDX	FIANCO TERMINALE DESTRO QUEEN
CR1018889	Q90FTSX	FIANCO TERMINALE SINISTRO QUEEN
CR0980009	CANT	TUBULAR HANDRAIL FRONTALE (AL METRO LINEARE)
CR0980019	9CLAT	TUBULAR HANDRAIL LATERALE SERIE 900
BN418031900211	9PRD	PIANO LATERALE RIBALTABILE DESTRO
BN418031900460	9PFD	PIANO LATERALE FISSO DESTRO
BN418031900221	9PRS	PIANO LATERALE RIBALTABILE SINISTRO
BN418031900470	9PFS	PIANO LATERALE FISSO SINISTRO
BN418031900121	9KR	KIT STATIC WARMER

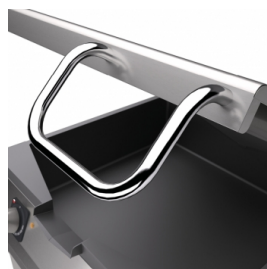
**GAS BRATT PAN MANUAL TILTING 80 LT -  
DUPLEX TANK**

CODE  
CR1018189

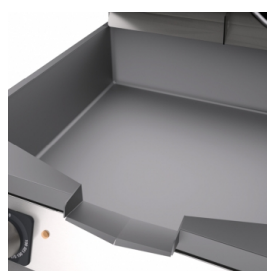
MODEL  
Q90BR/G80

SERIE  
QUEEN 9

# PRODUCT'S RANGE PLUS

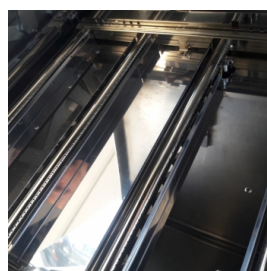


Self-balancing lids.



Wide-radius tilting cooking tank.

Equipment certified for low voltage  
directive 2014/35 / EU according to  
the international CB scheme.



The 8 rows of flame in the M80  
model and 12 in the M120 model  
guarantee uniform cooking. A  
thermostat regulates the  
temperature from 100 to 280 °C for  
precision management of cooking.



Thanks to the IPX5 water jet ingress  
protection rating, awarded after  
passing specific tests, knobs and  
knob bezels can be washed at the  
end of the working day without  
affecting performance or safety.



The front bar is a comfortable place  
for the chef to lean on; it means you  
will remain at a safe distance from  
the worktop and therefore protects  
from accidentally knocking against  
both items lying on the worktop  
and the knobs.

# GAS BRATT PAN MANUAL TILTING 80 LT - DUPLEX TANK

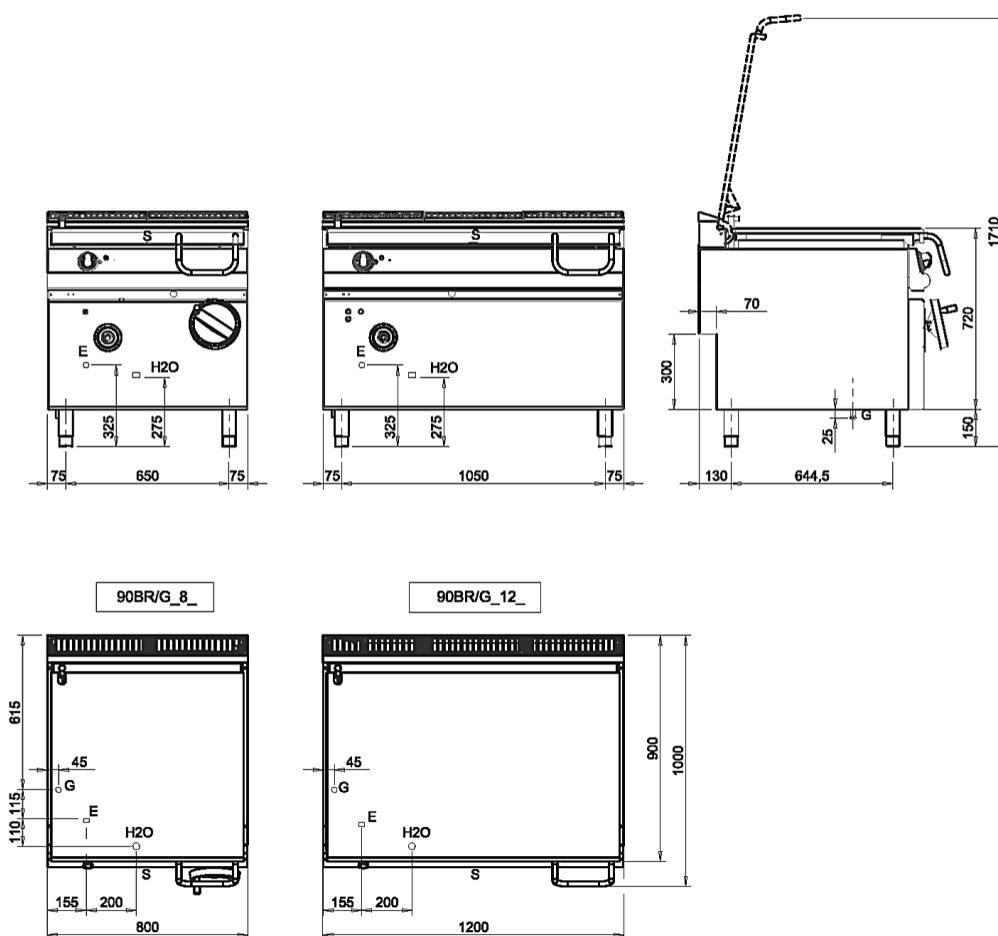
CODE  
CR1018189

MODEL  
Q90BR/G80

SERIE  
QUEEN 9

SCHEMA DI INSTALLAZIONE - INSTALLATION DIAGRAM - INSTALLATIONSPLAN - SCHÉMA D'INSTALLATION -  
ESQUEMA DE INSTALACION -INSTALLATIESCHEMA - IINSTALLATIONSRTNINGAR

MISURE IN mm - DIMENSIONS IN mm - ABMESSUNGEN IN mm  
MESURES EN mm - MEDIDAS EN mm - MATEN IN mm



Legenda – Legende – Key – Légende – Leyenda – Legenda

- E** Pressacavo entrata linea elettrica - Stopfbuchse - Electric cable stress relief – Presse étoupe de câble él  
Pisacable – Elektrische kabelwartel
- G** Attacco arrivo gas – Gasanschluss – Gas connection - Arrivée gaz – Union de gas – Gasaansluiting  
EN 10226-1 R ½; EN ISO 228-1 G ½ (DK)
- H2O** Attacco arrivo acqua – Wasseranschluss – Water inlet - Arrivée eau – Union de agua – Ateransluiting  
EN ISO 228-1 G 3/4
- S** Scarico vasca – Wannenabflussrohr – Pan outlet - Vidange du bac – Descarga cuba – Water toevoer