

FRY TOP S Electric M80 AISI Plate - 1/3 RIBBED - Thermostat Top Version

Project
Rev.:
Zone:
Location:



CODICE
CR1653799

MODELLO
Q70SFT/E823

SERIE
QUEEN 7

GENERAL CHARACTERISTICS

For those who do not want to give up the quality and solidity of a Queen stove, the Series 7 offers a 700 mm depth and more compact dimensions to fit any room, burners available in various configurations and wattages, enhanced by the refined Scotch Brite finish.

Thanks to its extreme compositional freedom, every composition is possible: you can combine Model i tops with accessorizable oven and neutral bases and hygienic finishes; create customized solutions by matching and attaching equipment back to back, sideways "flush" perfectly sealed, or "bridge" structures, offering high-level solutions that always perfectly meet the chef's needs.

As a total guarantee, all equipment that make up a Queen7 kitchen are certified in compliance with international standards, including CE, GAR, AGA and others.



TECHNICAL SPECIFICATIONS

Stainless steel outer shells and feet.

Height of the work surface adjustable from 840 to 900 mm.

Baking plate 15 mm thick totally independent of the top.

Large floodable channel around the perimeter of the hotplate for collecting cooking residues, sloping towards the front for draining liquids into the large drawer.

Firing plates made with satin-finished surface and surface coated with soft iron, AISI430 steel, or polished hard chrome, all available in smooth, mixed, or ribbed versions.

Large grease collection drawer.

Module sizes: 40,60,80

In the 120-width modules, the cooking plate is lowered from the top by 40 mm and tilted 10 mm toward the front of the machine.

Electric version: heating by incoloy armored heating elements.

Thermostatically controlled and adjustable baking temperature from 110 to 280°C.

Safety thermostat.

Large fat collection drawer with capacity of the entire volume of the perimeter channel

Grooved plate design ensures cleanliness right to the end of the plate

Plate not welded to the machine bed with optimisation of structural points under thermal stress

Plate not welded to the machine bed with optimisation of structural points under thermal stress

Thermal cutting that facilitates the user and adjacent machinery.

Uniform cooking temperature across the entire plate. Optimising heat in the cooking area and increasing operator comfort in the kitchen.

Water dispenser kit available as an accessory

FRY TOP S Electric M80 AISI Plate - 1/3 RIBBED - Thermostat Top Version

Project
Rev.:
Zone:
Location:



CODICE
CR1653799

MODELLO
Q70SFT/E823

SERIE
QUEEN 7

Technical Information

SPECIFICATION	DATA
MATERIAL	CR1653799
DEFINITION	Q70SFT/E823 FTE 1/3R 430 M80 TOP
COMMERCIAL LINE	QUEEN
SUPPLY	ELECTRICS
DIM. WIDTH	800 mm
DIM. PRODUCTIVITY	700 mm
DIM. HEIGHT	250 mm
NET WEIGHT	77 Kg
VOLUME (net)	0.14
PACKAGE LENGTH	840 mm
PACKAGE WIDTH	850 mm
PACKAGING HEIGHT	550 mm
PACKAGE VOLUME	0,396 m3
GROSS PACKING WEIGHT	87 Kg
STANDARD POWER SUPPLY	380-415V 3N
FREQUENCY	50-60 Hz
ELECTRICAL POWER	10.8 kW
IP GRADE	IPX5
CERTIFIED MODEL	Q70SFT/E823

FRY TOP S Electric M80 AISI Plate - 1/3 RIBBED -
Thermostat Top Version

Project
Rev.:
Zone:
Location:

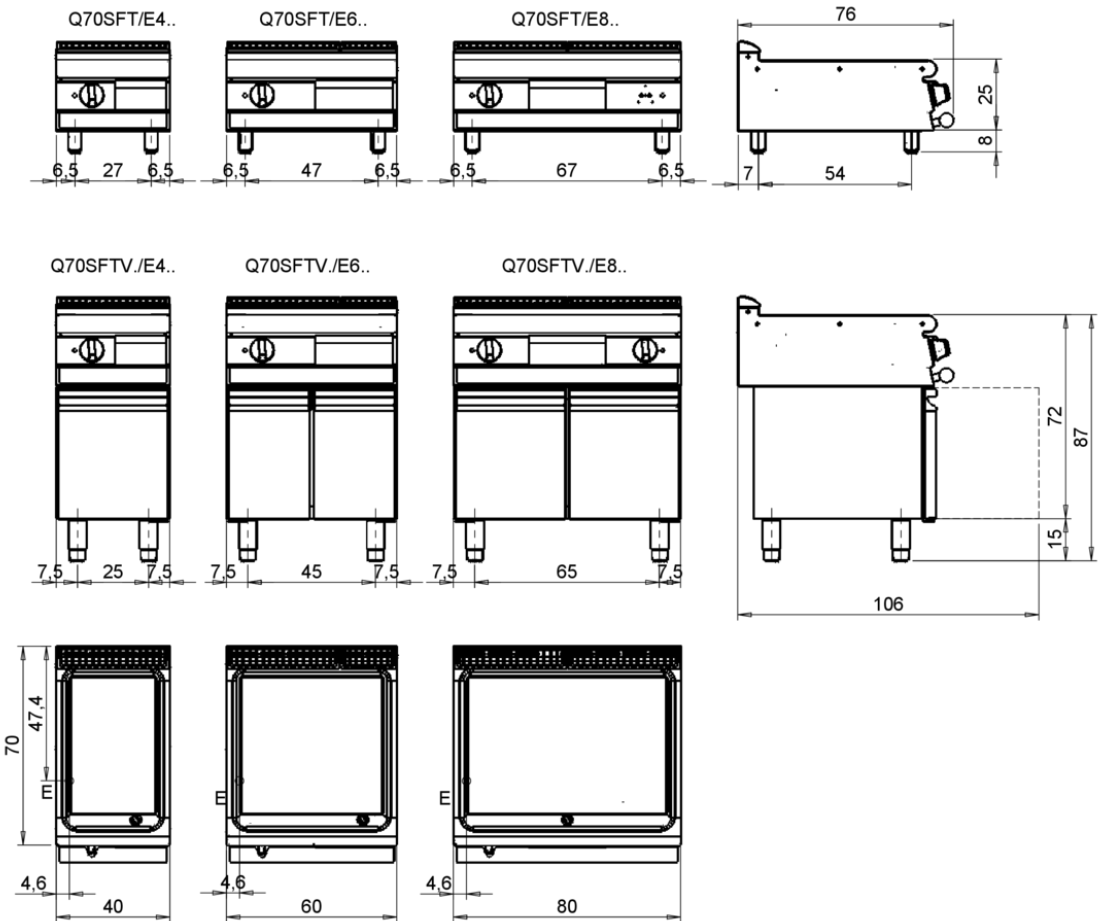


CODICE
CR1653799

MODELLO
Q70SFT/E823

SERIE
QUEEN 7

MISURE IN cm - DIMENSIONS IN cm - ABMESSUNGEN IN cm- MESURES EN cm
MEDIDAS EN cm - MATEN IN cm - DIMENSIONES EN cm



Legenda - Legende - Key - Légende - Leyenda - Legenda - Legenda	
E Pressacavo entrata linea elettrica - Stopfbuchse - Electric cable stress relief - Presse étoupe de câble él - Pisacable - Elektrische kabelwartel - Entrada cabo eléctrico	G Arrivo gas - Gasanschluss - Gas connection - Arrivée gaz - Union de gas - Gasaansluiting - Ligação gás
S Attacco scarico acqua - Wasserablauf - Water outlet - Vidange de l'eau - Desaguadero - Wateraftapaansluiting - Junção descarga água	H20 Arrivo acqua - Wasseranschluss - Water inlet - Arrivée eau - Union de água - Wateraansluiting - Junção alimentação água
S1 Scarico vasca - Wannenabflussrohr - Pan outlet - Vidange du bac - Descarga cuba - Water toevoer - Descarga da cuba	A1 = Calda - Heiss - Warm - Chaude - Caliente - Warm - Morno A2 = Fredda - Kalt - Cold - Froid - Fria - Koude - Frio
S2 Valvola di depressione - Anti-depression valve - Unterdruck ventil - Soupape de dépression - Válvula de depresi3n - Onderdrukklep - Válvula de depress3o	L Rubinetto di livello - Level tap - Wasserhahn - Robinet de niveau - Grifo de nivel - Niveaakraan - Torneira de nivel G
S3 Scarico acqua intercapedine - Wasserablauf Zwischenraum - Jacket water drain Evacuation eau double envelope - Descarga de água interstícios - Afvoer water tussenruimte - Descarga de água na marmita com Sistema de aquecimento indirecto	
S4 Scarico - Abflussrohr - Drain - Tuyau d'évacuation - Tubo de drenaje - Aftapbuis - Tubulaç3o de dreno	

FRY TOP S Electric M80 AISI Plate - 1/3 RIBBED - Thermostat Top Version

Project
Rev.:
Zone:
Location:

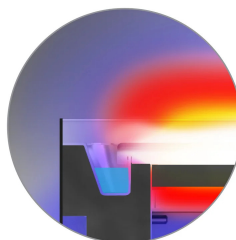


CODICE
CR1653799

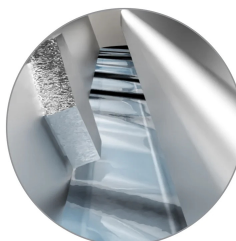
MODELLO
Q70SFT/E823

SERIE
QUEEN 7

PRODUCT'S RANGE PLUS



Thermal cutting that facilitates the user and adjacent machinery.



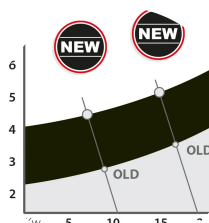
Water dispenser kit available as an accessory



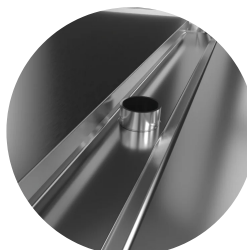
Grooved plate design ensures cleanliness right to the end of the plate



Non-welded plate to speed up maintenance and possible replacement in utilities.



New version with identical useful cooking surface area and reduced energy output. An increase in output per cm2 that allows a reduction in consumption of up to 15% compared to conventional versions.



Stainless steel overflow plug provided as standard for gutter flooding management.



Available as an accessory, the continuous discharge tube allows waste to be disposed of in an external receptacle.

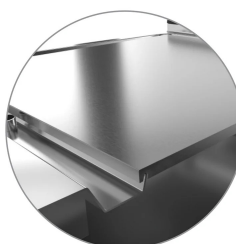


Plate not welded to the machine table with optimization of structural points subjected to thermal stress.

FRY TOP S Electric M80 AISI Plate - 1/3 RIBBED - Thermostat Top Version

Project
Rev.:
Zone:
Location:



CODICE
CR1653799

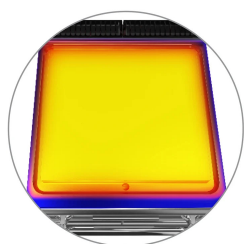
MODELLO
Q70SFT/E823

SERIE
QUEEN 7

PRODUCT'S RANGE PLUS



Floodable gutter for collecting cooking residue all around the perimeter of the plate easier cleaning, and better moisture retention of cooking food.



Uniform cooking temperature across the entire plate. Optimising heat in the cooking area and increasing operator comfort in the kitchen.



Capacious grease collection drawer with capacity of the entire volume of the perimeter channel.

FRY TOP S Electric M80 AISI Plate - 1/3 RIBBED - Thermostat Top Version

Project
Rev.:
Zone:
Location:



CODICE
CR1653799

MODELLO
Q70SFT/E823

SERIE
QUEEN 7

ACCESSORIES

CODE	MODELLO	DESCRIZIONE
CR1354989	PRPC	Smooth plate cleaning scraper - chrome-plated
CR1356399	RPR	Striped chrome plate scraper
CR1658629	D97CPFT68	Fry top cleaning drawer M60 - M80
CR1658609	97TFT	Plancha cleaning cap
CR1354999	PKLR	Replacement blades (10PCS)
CR1658659	7AFT8	M80 splash guard
CR1658849	Q7968CAF	WATER LOADING FOR FRY TOP M60 M80 - 70 90 QUEEN - GAS OR ELECTRIC
CR1658879	Q78EKSCFT	CONTINUOUS DRAIN FOR FRY TOP M80 - 70 QUEEN - ELECTRIC
CR1658909	Q78ECASCFT	LOAD + CONTINUOUS SCAR.FOR FRY TOP M80 - 70 QUEEN - ELECTRIC
CR1659249	PAFT8	M80 SUPER FRY TOP ACCESSORY HOLDER
CR1659259	AGMFT48	HOLDING GRID FOR FRY TOP
CR1659269	AGMFT6	HOLDING GRID FOR FRY TOP
CR1659359	AKBFT-1	KIT 3 BOWLS GN1/9 H65 MM
CR1659369	AKBFT-2	KIT 2 BOWLS GN1/6 H65 MM
CR1659379	AKBFT-3	KIT 1 BASIN GN1/3 H65 MM
CR1771699	78ACM	MAGNETIC CONTAINMENT SPLASHBACK FRY TOP 80X70