

## ELECTRIC BOILING PAN - DIRECT HEATING 150 LT

Project: .....  
Rev.: .....  
Zone: .....  
Location: .....



CODE  
CR1018109

MODEL  
Q90PF/ED150

SERIE  
QUEEN 9

### GENERAL FEATURES

- AISI 304 stainless-steel bases and worktops, Scotch-Brite finish
- Depth of 900 mm for high power and performance
- Catalogue offers more than 350 standard models
- Worktop, base cabinet, base cabinet with doors and oven versions
- 20/10 worktop thickness
- Twin-piece knobs prevent infiltration of dirt and have an IPX5 water ingress protection rating
- Gas ranges having burners with various configurations and power ratings: 3.5 kW - 5.7 kW, 7 kW and 10 kW. Double-ring burners for 7 and 10 kW models
- Wide range of accessories

The knobs offer optimum grip and help the chef to have the setting controls right under his eyes. Special attention has also been paid to the knob bezel that has been expertly designed to avoid penetration of liquids and/or dirt. Thanks to the IPX5 water jet ingress protection rating, awarded after passing specific tests, knobs and knob bezels can be washed at the end of the working day without affecting performance or safety.



### TECHNICAL DETAILS

ELECTRIC  
DIRECT HEATING  
ELECTRIC BOILING PAN - DIRECT HEATING 150 LT

- Water filled via two solenoid valves;
- Water drained with 2" valve
- AISI 316 stainless steel container bottom
- No water in the interspace indicator light;
- Safety thermostat to interrupt heating until restore of sufficient water level;
- 3 steel heating elements outside the container bottom, or 2 armoured heating element units inside the interspace.

## ELECTRIC BOILING PAN - DIRECT HEATING 150 LT

CODE  
CR1018109

MODEL  
Q90PF/ED150

SERIE  
QUEEN 9

### TECHNICAL INFORMATION

| SPECIFICATIONS                | DATA                                  |
|-------------------------------|---------------------------------------|
| CODE                          | CR1018109                             |
| DEFINITION                    | Q90PF/ED150 PENTOLA EL.M80 DIR.150 LT |
| COMMERCIAL LINE               | QUEEN                                 |
| SUPPLY                        | ELETTRICA                             |
| WIDTH                         | 800 MM                                |
| DEPTH                         | 900 MM                                |
| HEIGHT                        | 870 MM                                |
| NET WEIGHT                    | 139,800                               |
| VOLUME                        | 0,626 M3                              |
| PACKAGING LENGTH              | 860,000                               |
| PACKAGING WIDTH               | 1020,000                              |
| PACKAGING HEIGHT              | 1260,000                              |
| PACKAGING VOLUME              | 1,100                                 |
| PACKAGING GROSS WEIGHT        | 155,000                               |
| POWER SUPPLY VOLTAGE STANDARD | 380-415V 3N                           |
| FREQUENCY                     | 50-60 Hz                              |
| ELECTRIC POWER                | 12,000 KW                             |
| IPX PROTECTION                | IPX5                                  |
| CERTIFIED MODEL               | Q90PF/ED150                           |
| CERTIFICATION NUMBER          | -                                     |

## ELECTRIC BOILING PAN - DIRECT HEATING 150 LT

CODE  
CR1018109

MODEL  
Q90PF/ED150

SERIE  
QUEEN 9

### ACCESSORIESES

| CODE           | MODEL     | DESCRIPTION   |
|----------------|-----------|---|
| MA97347000     | XP9-C5    | BOILING PAN BASKET 50LT XP9-C5                                  |
| MA97348000     | XP9-CV5   | BOILING PAN BASKET 50LT XP9-CV5                                 |
| CR0599730      | 7C8       | BASKET FOR PASTA 1 SECTION FOR BOILING PAN - 80 Lt. HOLE Ø 3 MM |
| CR0599740      | 7CV8      | BASKET FOR VEGETABLE 80LT XP7CV8                                |
| MA97349000     | XP9-I5    | DRAIN FUNNEL X 50LT XP9-I5                                      |
| CR0592790      | ZA80      | FRONT PLINTH  |
| CR0982789      | ZL90      | SIDE PLINTH SERIE 900   |
| MA97432000     | NXR       | SET OF WHEELS NXR   |
| CR0592869      | CR0592869 | 4 PIEDI X INSTALL.SU ZOCCOLO DI CEMENTO                         |
| CR1015339      | QPT       | N. 4 PIEDINI IN ACCIAIO INOX PER INSTALLAZIONE SU PIANI         |
| CR0592879      | CR0592879 | KIT ANTI RIBALTAMENTO 2 PIEDI X N900                            |
| CR0592399      | NXTVT1    | KIT PANNELLI X BASE TECN.1 FRONTE NXTVT1                        |
| CR0592409      | NXTVT2    | KIT PANNELLI X BASE TECN.2 FRONTI NXTVT2                        |
| CR1018879      | Q90FTDX   | FIANCO TERMINALE DESTRO QUEEN                                   |
| CR1018889      | Q90FTSX   | FIANCO TERMINALE SINISTRO QUEEN                                 |
| CR0980019      | 9CLAT     | TUBULAR HANDRAIL LATERALE SERIE 900                             |
| BN418031900211 | 9PRD      | PIANO LATERALE RIBALTABILE DESTRO                               |
| BN418031900460 | 9PFD      | PIANO LATERALE FISSO DESTRO                                     |
| BN418031900221 | 9PRS      | PIANO LATERALE RIBALTABILE SINISTRO                             |
| BN418031900470 | 9PFS      | PIANO LATERALE FISSO SINISTRO                                   |

**ELECTRIC BOILING PAN - DIRECT HEATING**  
**150 LT**

CODE  
CR1018109

MODEL  
Q90PF/ED150

SERIE  
QUEEN 9

**PRODUCT'S  
RANGE PLUS**



Indirect heating with low-pressure steam generated by the water in the jacket: safe and easy operation thanks to pressure gauge, safety valve and compensating valve.



Stainless-steel pan with AISI316 bottom

Equipment certified for low voltage directive 2014/35 / EU according to the international CB scheme.



May be filled with either hot or cold water.



Thanks to the IPX5 water jet ingress protection rating, awarded after passing specific tests, knobs and knob bezels can be washed at the end of the working day without affecting performance or safety.



The front bar is a comfortable place for the chef to lean on; it means you will remain at a safe distance from the worktop and therefore protects from accidentally knocking against both items lying on the worktop and the knobs.

# ELECTRIC BOILING PAN - DIRECT HEATING 150 LT

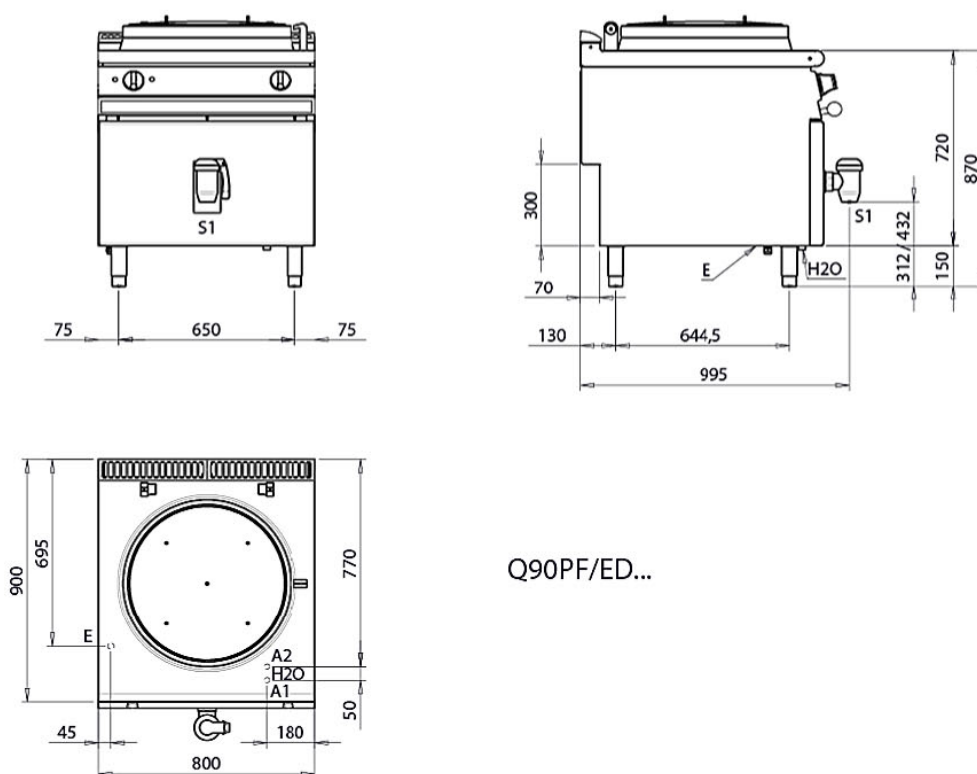
CODE  
CR1018109

MODEL  
Q90PF/ED150

SERIE  
QUEEN 9

SCHEMA DI INSTALLAZIONE - INSTALLATION DIAGRAM - INSTALLATIONSPLAN - SCHÉMA D'INSTALLATION -  
ESQUEMA DE INSTALACION -INSTALLATIESCHEMA - IINSTALLATIONSRTNINGAR

MISURE IN mm - DIMENSIONS IN mm - ABMESSUNGEN IN mm  
MESURES EN mm - MEDIDAS EN mm - MATEN IN mm



Q90PF/ED...

Legenda - Legende - Key - Légende - Leyenda - Legenda

- H20 Attacchi arrivo acqua - Wasseranschluss - Water inlet - Arrivée eau - Union de agua - Wateraansluiting
- A1 = Calda - Heiss - Warm - Chaude - Caliente - Warm EN ISO 228-1 G 3/4
- A2 = Fredda - Kalt - Cold - Froid - Fria - Koude EN ISO 228-1 G 3/4
- E Pressacavo entrata linea elettrica - Sopfbuchse - Electric cable stress relief  
Presse étoupe de câble él. - Elektrische kabelwartel
- S1 Scarico acqua - Wasserablauf - Water outlet - Vidange de l'eau - Desaguadero -  
Waterafwaansluiting 2'