

## ELECTRIC BRATT PAN MOTORISED TILTING 120 LT - DUPLEX TANK

Project: .....  
Rev.: .....  
Zone: .....  
Location: .....



CODE  
CR1018249

MODEL  
Q90BR/EM120

SERIE  
QUEEN 9

### GENERAL FEATURES

- AISI 304 stainless-steel bases and worktops, Scotch-Brite finish
- Depth of 900 mm for high power and performance
- Catalogue offers more than 350 standard models
- Worktop, base cabinet, base cabinet with doors and oven versions
- 20/10 worktop thickness
- Twin-piece knobs prevent infiltration of dirt and have an IPX5 water ingress protection rating
- Gas ranges having burners with various configurations and power ratings: 3.5 kW - 5.7 kW, 7 kW and 10 kW. Double-ring burners for 7 and 10 kW models
- Wide range of accessories

The knobs offer optimum grip and help the chef to have the setting controls right under his eyes. Special attention has also been paid to the knob bezel that has been expertly designed to avoid penetration of liquids and/or dirt. Thanks to the IPX5 water jet ingress protection rating, awarded after passing specific tests, knobs and knob bezels can be washed at the end of the working day without affecting performance or safety.



### TECHNICAL DETAILS

ELECTRIC  
MOTORIZED TILTING  
ELECTRIC BRATT PAN MOTORISED TILTING 120 LT - DUPLEX  
TANK

- Water filled via solenoid valve
- Self-balanced lid with double steel wall
- Safety device interrupting power supply when tub is lifted
- Adjustable temperature from 100 to 280°C.
- Heating element unit made of incoloy stainless steel heating elements;
- Safety thermostat.

## ELECTRIC BRATT PAN MOTORISED TILTING 120 LT - DUPLEX TANK

CODE CR1018249	MODEL Q90BR/EM120	SERIE QUEEN 9
-------------------	----------------------	------------------

### TECHNICAL INFORMATION

SPECIFICATIONS	DATA
CODE	CR1018249
DEFINITION	Q90BR/EM120 BRASIERA EL. M120 INOX MOT.
COMMERCIAL LINE	QUEEN
SUPPLY	ELETTRICA
WIDTH	1200 MM
DEPTH	900 MM
HEIGHT	870 MM
NET WEIGHT	183,000
VOLUME	0,940 M3
PACKAGING LENGTH	1260,000
PACKAGING WIDTH	1020,000
PACKAGING HEIGHT	1150,000
PACKAGING VOLUME	1,478
PACKAGING GROSS WEIGHT	211,000
POWER SUPPLY VOLTAGE STANDARD	380-415V 3N
FREQUENCY	50-60 Hz
ELECTRIC POWER	13,500 KW
IPX PROTECTION	IPX5
CERTIFIED MODEL	Q90BR/EM120
CERTIFICATION NUMBER	-

## ELECTRIC BRATT PAN MOTORISED TILTING 120 LT - DUPLEX TANK

CODE CR1018249	MODEL Q90BR/EM120	SERIE QUEEN 9
-------------------	----------------------	------------------

### ACCESSORIESES

CODE	MODEL	DESCRIPTION
CR0592770	ZA40	FRONT PLINTH
CR0982789	ZL90	SIDE PLINTH SERIE 900
MA97432000	NXR	SET OF WHEELS NXR
MA97433000	NXRI	SET OF WHEELS INOX NXRI
CR1015369	QCH20	DIRECTABLE WATER FLUE
CR0592869	CR0592869	4 PIEDI X INSTALL.SU ZOCCOLO DI CEMENTO
CR1015339	QPT	N. 4 PIEDINI IN ACCIAIO INOX PER INSTALLAZIONE SU PIANI
CR0592879	CR0592879	KIT ANTI RIBALTAMENTO 2 PIEDI X N900
CR0592399	NXTVT1	KIT PANNELLI X BASE TECN.1 FRONTE NXTVT1
CR0592409	NXTVT2	KIT PANNELLI X BASE TECN.2 FRONTI NXTVT2
CR1018879	Q90FTDX	FIANCO TERMINALE DESTRO QUEEN
CR1018889	Q90FTSX	FIANCO TERMINALE SINISTRO QUEEN
CR0980009	CANT	TUBULAR HANDRAIL FRONTALE (AL METRO LINEARE)
CR0980019	9CLAT	TUBULAR HANDRAIL LATERALE SERIE 900
BN418031900211	9PRD	PIANO LATERALE RIBALTABILE DESTRO
BN418031900460	9PFD	PIANO LATERALE FISSO DESTRO
BN418031900221	9PRS	PIANO LATERALE RIBALTABILE SINISTRO
BN418031900470	9PFS	PIANO LATERALE FISSO SINISTRO
BN418031900121	9KR	KIT STATIC WARMER

**ELECTRIC BRATT PAN MOTORISED TILTING  
120 LT - DUPLEX TANK**

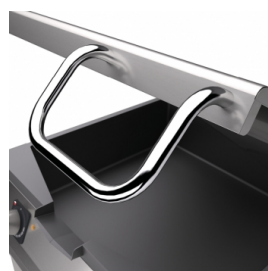
CODE  
CR1018249

MODEL  
Q90BR/EM120

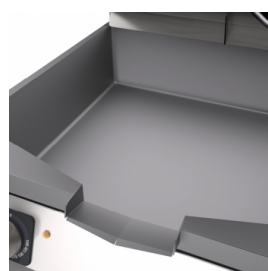
SERIE  
QUEEN 9

**QUEEN**

**PRODUCT'S  
RANGE PLUS**



Self-balancing lids.



Wide-radius tilting cooking tank.

Equipment certified for low voltage directive 2014/35 / EU according to the international CB scheme.



Thanks to the IPX5 water jet ingress protection rating, awarded after passing specific tests, knobs and knob bezels can be washed at the end of the working day without affecting performance or safety.



The front bar is a comfortable place for the chef to lean on; it means you will remain at a safe distance from the worktop and therefore protects from accidentally knocking against both items lying on the worktop and the knobs.

# ELECTRIC BRATT PAN MOTORISED TILTING 120 LT - DUPLEX TANK

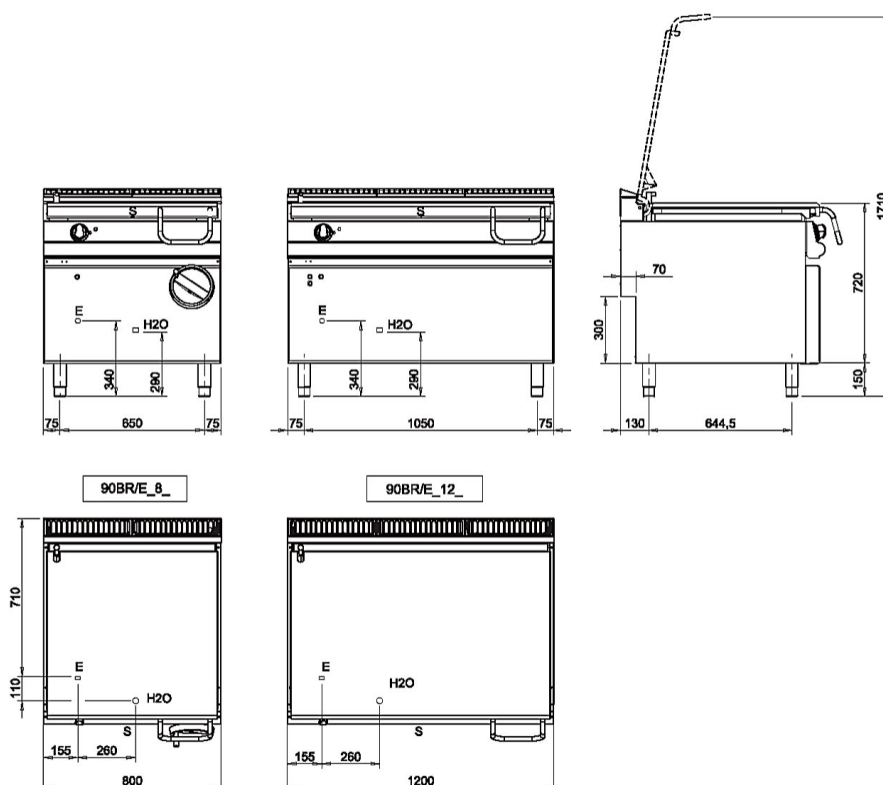
CODE  
CR1018249

MODEL  
Q90BR/EM120

SERIE  
QUEEN 9

## SCHEMA DI INSTALLAZIONE - INSTALLATION DIAGRAM - INSTALLATIONSPLAN - SCHÉMA D'INSTALLATION - ESQUEMA DE INSTALACION -INSTALLATIESHEMA - IINSTALLATIONSRTNINGAR

MISURE IN mm - DIMENSIONS IN mm - ABMESSUNGEN IN mm  
MESURES EN mm - MEDIDAS EN mm - MATEN IN mm



### Legenda - Legende - Key - Légende - Leyenda - Legenda

- E** Pressacavo entrata linea elettrica - Stopfbuchse - Electric cable stress relief  
Presse étoupe de cable él. - Pisacable - Elektrische kabelwartel
- H20** Attacco arrivo acqua - Wasseranschluss - Water inlet  
Arrivée eau - Union de agua - Wateraansluiting  
**EN ISO 228-1 G 3/4**
- S** Scarico vasca - Wannenabflussrohr - Pan outlet  
Vidange du bac - Descarga cuba - Water toevoer