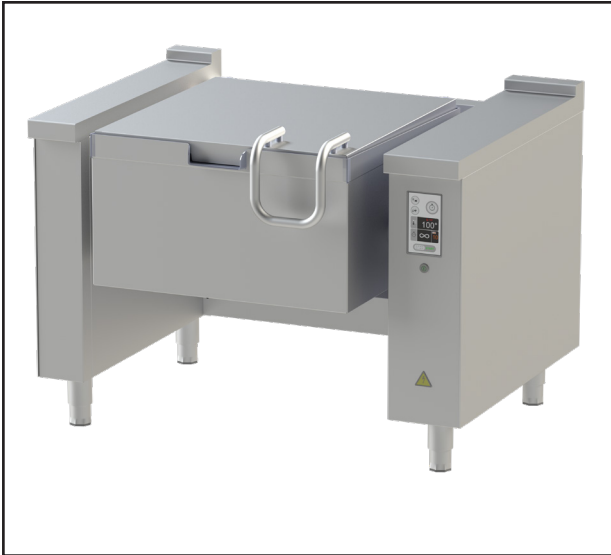


Modular Cooking - Tilting Pan

Electric - Tilting Pan

NETP 2GN TC (GR)



Due to continuous technical development, the image shown may not represent the latest design of the unit.

DESCRIPTION

Modular electric tilting braising pan with 900 mm depth, sized for 2 x 1/1 GN with usable volume of 65 liters, powered with Steady State Surface heaters.

Usable for multitude application: boiling, steaming, frying, braising and simmering.

Made of AISI 304 with 2 mm top thickness, griddle is made of 15 mm ss 420 steel, that prevent rust and deliver good thermal conductivity. Motorized tilting configured with low speed for stable transfer of food to the pan.

OTHER AVAILABLE MODELS

- NETP 3GN TC GR

MAIN FEATURES

- Powered with 11.9 kW SSS heaters.
- Gross capacity of 80 liters and net capacity of 65 liters.
- Designed with left and right column with unifying frame that connects the frame and the pan.
- Motorized tilting for ease of operation. Operating at low speed for stable transfer of food to the pan.
- Welded AISI griddle AISI 420 with thickness of 15 mm, preventing rust.
- Temperature control from 100 to 300 degree Celcius.
- Touch screen interface to adjust energy level, temperature and time.

CONSTRUCTION

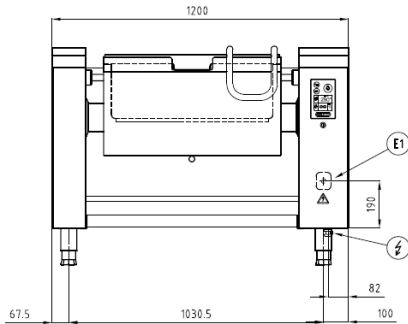
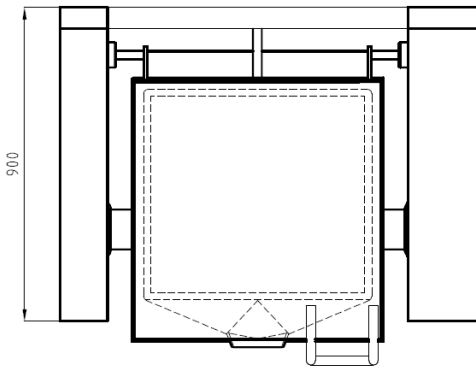
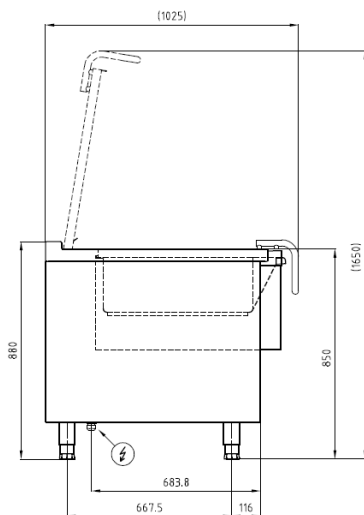
- External construction entirely with AISI 304.
- Top panel with 2 mm thickness. Orbital surface finishing: resistant toward scratches.
- Front panel is constructed of 1 mm AISI 304 with satin surface finish.
- Side panel is constructed of 0.8 mm AISI 304 with satin surface finish.
- Tubular, height adjustable (-3...+50 mm) stainless steel legs.
- Nayati connection system between Grandis products on the front panels, cabinets, and splashbacks.

INCLUDED ACCESSORIES

- N/A.

OPTIONAL ACCESSORIES

- Power cable, H07RN-F (5 x 4 mm) p/mtr.
- Plinth base.
- Unifying column set between two units.
- Volume measuring stick
- Column swivel faucet.

FRONT**TOP****SIDE**

*Overall dimension in mm

TECHNICAL DATA**External Dimensions**

Width	: 1200 mm
Depth	: 900 mm
Height	: 850/880 mm

Cooking Surface

Cooking zones	: 65 liters (2 x GN 1/1), 650 x 600 mm
Heating zones	: 1
Control type	: Temperature, energy and time control

Electrical Supply Data

Total connected load	: 11.9 kW
Voltage	: 400V, 3PNE AC /50-60Hz
Recommended fuse	: 25 A (slow)

Connections

Water	: N/A
Drain	: N/A

Heat & Steam Emissions

Direct heat emission	: 5.35 kW
Latent heat emission	: 4.76 kW
Steam emission	: 6.99 kg/h

PACKAGING DATA

Width	: 1230 mm
Depth	: 930 mm
Height	: 1000 mm
Volume	: 1.14 m ³

WEIGHT

Net Weight	: 294 kg
Gross Weight	: 361 kg

PT. NAYATI INDONESIAwww.nayati.com

Nayati reserves the right to make product alterations and or price adjustments at any time and can not be held responsible for any printing errors or omissions.

2/14/2025