



Total Food-Service Solutions

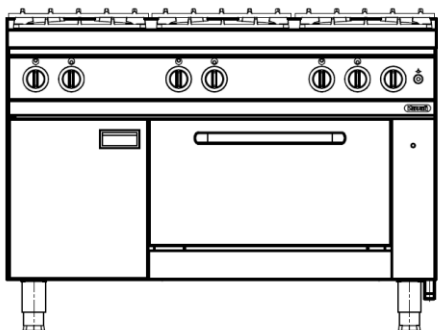
**Modular Gas Table Range
NGR 12-90 GR, Gas Prime Cooker
with Six Gas Burners and Oven**

ITEM#

MODEL#

NAME#

S/N#



Grandis Modular Gas Table Range

**Gas Prime Cooker with Six
Burners and Oven**

NGR 12-90 GR SIX GAS BURNERS,
FLAME FAILURE FUNCTION,
CLOSED CABINET
AND OVEN

Short Form Specification

Item No.

Nayati Gas Range w/ Oven with 54.5 kW power rate. Oven temperature maintained by thermostat with maximum working temperature of 310°C, unit to be installed on open cabinet or similar elements, cantilever, or solid block solutions. Heavy-duty cast iron pan support included. Featuring removable clip joint to connect Meritus family product.

Main Features

- Durable Cast Iron pot holder.
- H2 Cabinet Finishing.
- Optional 6 x 10 kW Burner Power.
- Maximum oven working temperature of 310°C
- Easy oven hinge, which is removable for easier cleaning and maintenance.
- Oven Handle made from non heating material, to prevent injury during high temperature operation.
- Unit to be installed free standing, can be joined with base cabinet, table stand or cantilever system.
- Service maintenance can be done from the front panel.

Construction

- All exterior panels in 304 type of Stainless Steel
- Orbital top panel anti-scratch finishing.
- Top and side are mounted by 2.0 mm of Stainless Steel.
- Adjustable ± 25 mm Stainless Steel leg.
- Certified IPX4 protection.

Included Accessories

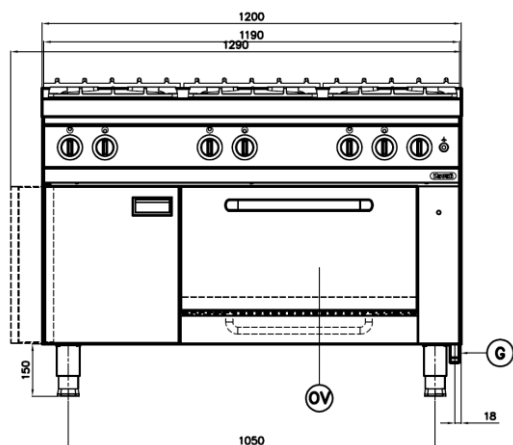
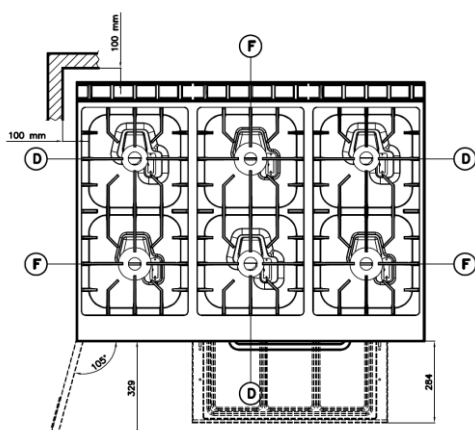
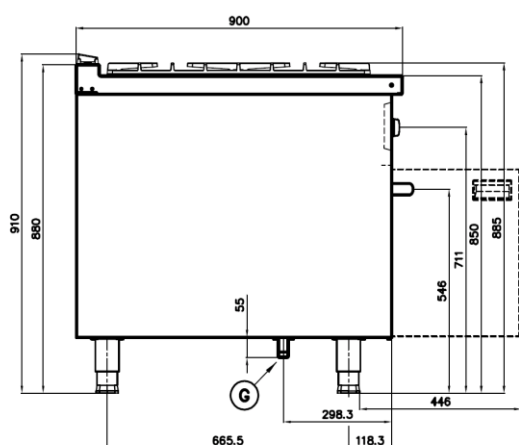
- Grill Oven.
- Extra Nozzle (Main Burner & Pilot Burner).

Optional Accessories

- Clip plate for joining.

APPROVAL:



Front

Top

Side


(G) Gas Connection R 3/4"

(F) Open Burner 10 kW

(D) Open Burner 5.5 kW

(OV) Oven Burner 8 kW

* Overall Dimension in mm

Gas

Gas Power: 54.5 kW (46,870 kCal/h)

Gas Type Option: G30/G31, G20

Gas Inlet: R 3/4"

Natural Gas-Pressure: G20: 20mbar

LPG Gas Pressure: G30/G31:
28-30mbar/37mbar

Key Information:

Cooking Surface Open Burner: 3x(370x725)

Cooking Surface Oven 575x666x305

Direct heat emission: 11.63 kW

Direct heat emission (oven): 2.80 kW

Latent heat emission: 4.65 kW

Latent heat emission (oven): 1.60 kW

Steam emission: 6.84 kg /h

Steam emission (oven): 2.35 kg /h

Working Temperature MIN: 100°C (oven)

Working Temperature MAX: 310°C (oven)

Max Size Pan: d:40 cm

Net Weight: 172 Kg

Shipping Height: 1020 mm

Shipping Width: 1255 mm

Shipping Depth: 995 mm

Shipping Volume: 1.274 m³

**Modular Gas Table Range
NGR 12-90 GR, Gas Prime Cooker
with Six Gas Burners and Oven**

The company reserves the right to make
modifications to the products without prior notice.
All information correct at time of printing