

Modular Cooking - Grandis

Electric - Bain Marie

NEBM 6-90 GR



Due to continuous technical development, the image shown may not represent the latest design of the unit.

DESCRIPTION

Modular electric bain marie with 900 mm depth and 1 x 1/1 GN capacity with 15 liters of water bath, heated with Nayati SSS® die cast aluminium heating elements with a total of 2.6 kW connected load.

Usable for food warming before food distribution.

Made of AISI 304 with 2 mm top thickness, temperature controlled, fully welded basin with 1 x 1/1 GN capacity, the Nayati SSS® die cast aluminium heating elements are capable in delivering high temperature with consistent result.

OTHER AVAILABLE MODELS

- NEBM 8-90 GR

MAIN FEATURES

- Powered with 2 x 1.3 kW Nayati SSS® die cast aluminium heating elements.
- Tank is made of AISI 304 with height of 210 mm.
- Usable water bath volume of 15 liters, equipped with overflow pipe.
- Manual water filling system with knob integrated on the front panel.
- Temperature control from 30 degree Celcius to 90 degree Celcius.
- Thermal-cut off when overheated.

CONSTRUCTION

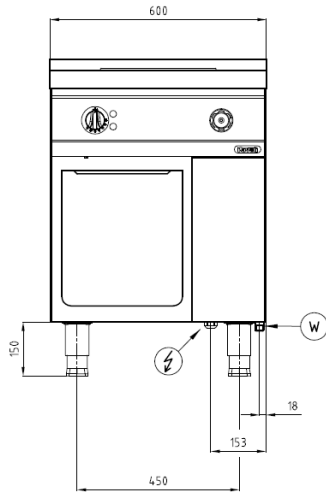
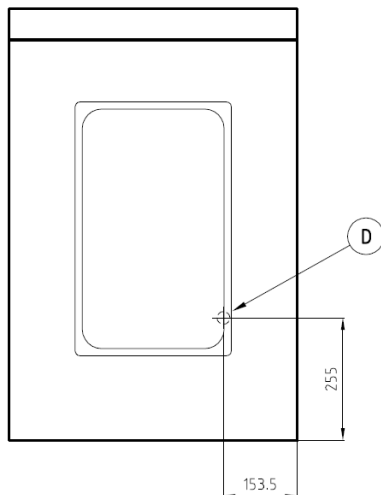
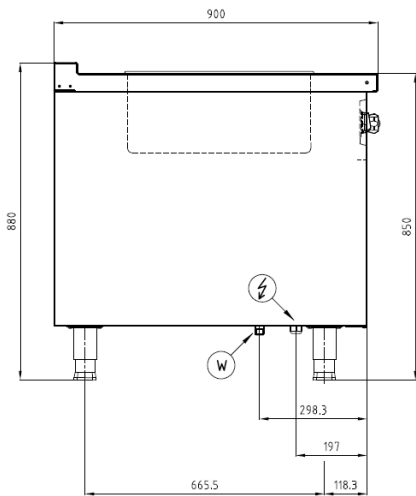
- External construction entirely with AISI 304.
- Top panel with 2 mm thickness. Orbital surface finishing: resistant toward scratches.
- Front panel is constructed of 1 mm AISI 304 with satin surface finish.
- Side panel is constructed of 0.8 mm AISI 304 with satin surface finish.
- Tubular, height adjustable (-3...+50 mm) stainless steel legs.
- Cabinet executed with H2 radius.
- IPX4 water protection level.

INCLUDED ACCESSORIES

- Grandis joining clip.

OPTIONAL ACCESSORIES

- Power cable, H07RN-F (3 x 1.5 mm) p/mtr.
- Joint clip GR.
- Various GN Pan configuration
- Swing door 6-90 GR.

FRONT**TOP****SIDE**

*Overall dimension in mm

TECHNICAL DATA**External Dimensions**

Width	: 600 mm
Depth	: 900 mm
Height	: 850/880 mm

Cooking Surface

Cooking zones	: 1 x GN 1/1, 310 x 510 mm
Heating zones	: 1
Control type	: Modulating temperature control

Electrical Supply Data

Total connected load	: 2.6 kW
Voltage	: 230V, 1PNE AC / 50-60 Hz
Recommended fuse	: 13 A (slow)

Connections

Water	: DN 15 (1/2")
Drain	: DN 20 (3/4")

Heat & Steam Emissions

Direct heat emission	: 0.33 kW
Latent heat emission	: 0.52 kW
Steam emission	: 0.77 kg/h

PACKAGING DATA

Width	: 630 mm
Depth	: 930 mm
Height	: 1000 mm
Volume	: 0.59 m ³

WEIGHT

Net Weight	: 55 kg
Gross Weight	: 68 kg