

Asian Cooking - Gas Steamer
Gas -Three Deck Steam Cabinet
NGSCD 9-90 LN



Due to continuous technical development, the image shown may not represent the latest design of the unit.

DESCRIPTION

Gas steam cabinet with three decks. Equipped with high-performance burners with a total of 33 kW power rate for quick steam.

Each steam chamber is individually controlled with three steaming operations to achieve the ideal balance between performance and energy-saving when needed.

Powerful, compact, and suitable for rice and any steamed food, the NGSCD steamer is the perfect choice for high-frequent Asian restaurants.

OTHER AVAILABLE MODELS

- NGSCD 9-90 CE
- NGSCD 12-90 LN

MAIN FEATURES

- High-performance atmospheric burners with a total power rate of 33 kW.
- Electronic Ignition of the pilot and use of the main burners with push one-button technology.
- Equipped with pilot burners, gas valve, gas knee levers and an electronic flame failure safety device (FS) that shuts down the gas supply for main burners within 2 seconds when no pilot flame is detected.
- Steam box engine with automatic filling system and security thermostat. Maximum water usage 29 liters/hour.
- Three, individually controlled steam chambers. Top & middle deck with 660/615/220 mm, bottom deck 660/615/400 mm (w/d/h) internal dimensions.

CONSTRUCTION

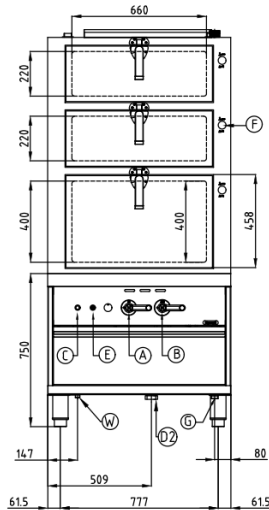
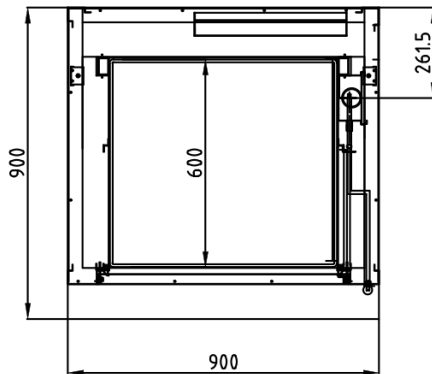
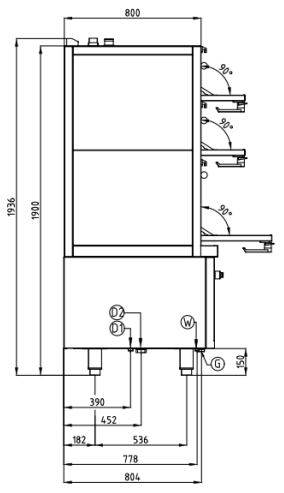
- Sturdy frame made of stainless steel AISI 430.
- Front and side panels made of stainless steel AISI 304 with hairline surface pattern (0.8 mm).
- Back panel made of stainless steel AISI 304 with hairline surface pattern (0.8 mm).
- Tubular, height adjustable (± 10 mm) stainless steel legs.
- Types of installations: free standing or placed on a plinth.
- Unit made of high-grade stainless steel.

INCLUDED ACCESSORIES

- Stainless steel wire grills 650x600 mm (4 pcs).

OPTIONAL ACCESSORIES

- N/A

FRONT**TOP****SIDE**

*Overall dimension in mm

TECHNICAL DATA**External Dimensions**

Width : 900 mm
 Depth : 900 mm
 Height : 1900/1936 mm

Cooking Surface

Cooking zones : 650 x 600 (3pcs) mm

Gas Power Rating

Heat input total : LPG/Natural Gas 33 kW, and 0.004 kW - 230V, 1PNE AC / 50-60 Hz

No. of burners : 3

Control type : High-low power control

Gas type options: LPG G30, G31
 Natural Gas G20

Electrical Supply Data

Total connected load : 0.004 kW
 Voltage : 230V, 1NPE AC / 50-60 Hz
 Recommended fuse : 6 A (slow)

Connections

Gas : DN25 (1")
 Water : DN15 (1/2")
 Drain : DN32 (1 1/4") & DN40 (1 1/2")

Heat & Steam Emissions

Direct heat emission : LPG/Natural Gas 4.95 kW
 Latent heat emission : LPG/Natural Gas 5.94 kW
 Steam emission : LPG/Natural Gas 8.75 kg/h

PACKAGING DATA

Width : 1000 mm
 Depth : 1020 mm
 Height : 2136 mm
 Volume : 2.18 m³

WEIGHT

Net Weight : 243 kg
 Gross Weight : 300 kg