

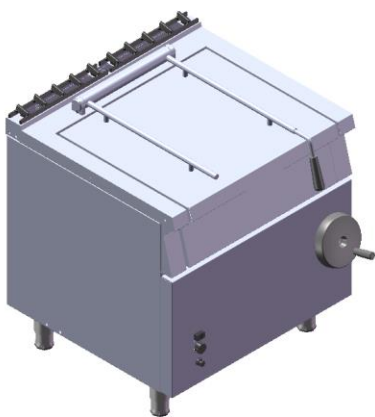


Total Food-Service Solutions

## Modular Cooking – Meritus 750

### Gas Tilting Pan

#### NGTP 8-75 A (MR)



\*Due to routine technical improvement, the photograph shown may not represent the latest design of the products.

#### AVAILABLE MODEL

1. NGTP 8-75 A (MR)

#### DESCRIPTION

Gas Tilting Pan with 12 kW power rate. The thick bottom plate spread the heat from burner below. Operation temperature maintained by thermostat with maximum working temperature of 340°C, unit to be installed on open cabinet or similar elements, cantilever, or solid block solutions. Featuring removable clip joint to connect New Meritus family product.

ITEM# : \_\_\_\_\_

MODEL# : \_\_\_\_\_

NAME : \_\_\_\_\_

SN : \_\_\_\_\_

#### MAIN FEATURE

- Maximum working temperature of 340°
- Unit to be installed free standing, can be joined with base cabinet, table stand or cantilever system.
- 43 Liters capacity of pan
- Manual tilting operation
- Service maintenance can be done from the front panel.
- All main burners are equipped with Safety Thermocouple accompanied by flame failure function

#### CONSTRUCTION

- All exterior panels in 304 type of Stainless Steel
- Orbital top panel anti-scratch finishing.
- Top and side are mounted by 1.5mm of Stainless Steel.
- Adjustable  $\pm 25$  mm Stainless Steel leg.
- Certified IPX4 protection.

#### INCLUDED ACCESSORIES

- Extra Nozzle. (Main burner & pilot burner)

#### OPTIONAL ACCESSORIES

- Clip plate for joining

APPROVAL : \_\_\_\_\_

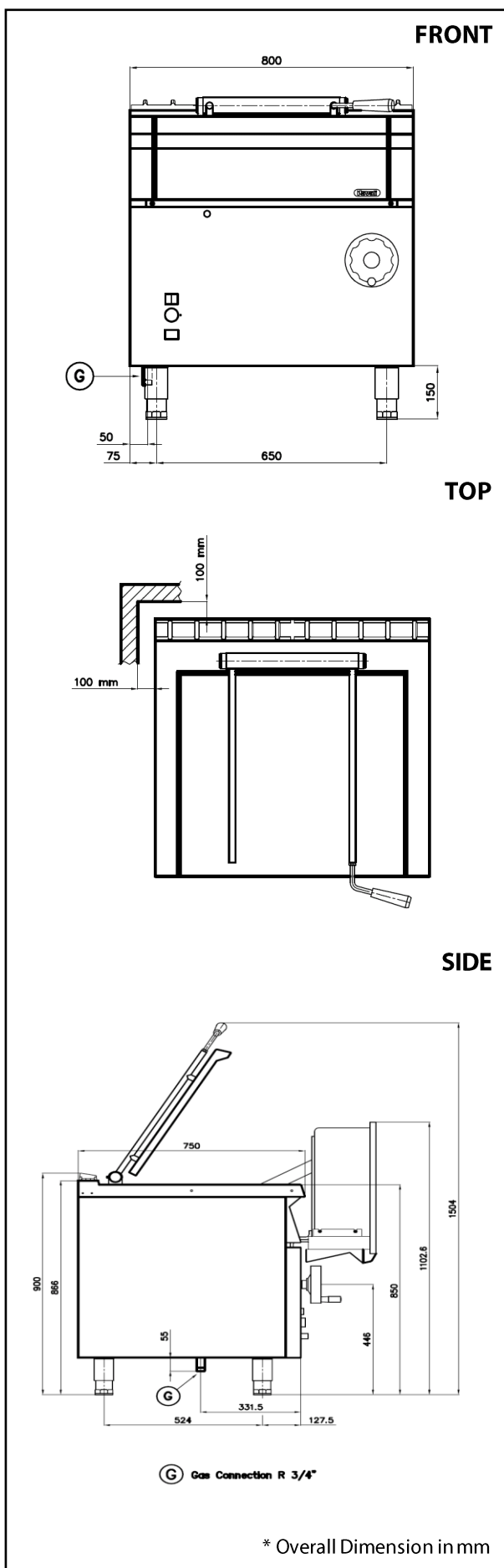


PT. NAYATI INDONESIA  
[www.nayati.com](http://www.nayati.com)  
[nayati@nayati.com](mailto:nayati@nayati.com)

The company reserves the right to make modifications to the products without prior notice.  
All information correct at time of printing.  
2018.11.30



Modular Cooking – Meritus 750  
Gas Tilting Pan  
NGTP 8-75 A (MR)



## GAS

Gas Power	:	12 kW (10.320 kCal/h)
Gas Type Option	:	G30/G31, G20
Gas Inlet	:	R 3/4"
Natural Gas-Pressure	:	G20: 20 mbar
LPG Gas Pressure	:	28-30 mbar/ 37 mbar

## KEY INFORMATION

Unit Dimension (WxDxH)	:	800x750x850 mm
Direct Heat Emission	:	5.40 kW
Latent Heat Emission	:	5.40 kW
Steam Emission	:	7.56 kg / h
Min. Working Temperature	:	100° C
Max. Working Temperature	:	340° C
Pan Capacity	:	43 Liters
Number of Burners	:	1
Net weight	:	119 kg

## PACKING DETAILS

Shipping width	:	850 mm
Shipping depth	:	940 mm
Shipping height	:	1060 mm
Shipping volume	:	0.846 m <sup>3</sup>
Gross weight	:	132 kg

## APPROVAL

\_\_\_\_\_