

## Modular Cooking - Meritus

### Gas - Range

#### NGTR 8-75 (ME1)



Due to continuous technical development, the image shown may not represent the latest design of the unit.

#### DESCRIPTION

Modular gas open burner with 750 mm depth and 4 hobs, 2 sets of 3.5 kW and 7.5 kW cast iron burners.

Usable for boiling, steaming, frying, braising, simmering and steam frying.

Made of AISI 304 with 1.5 mm top thickness, manual ignited, fully welded basin for hygiene purpose, galvanized coated cast iron burner.

#### OTHER AVAILABLE MODELS

NGR 8-75 (ME)

NGR 12-75 (ME)

NGTR 4-75 (ME)

NGTR 12-75 (ME)

NGR 8-75 EOVS (ME)

NGR 12-75 EOVS (ME)

#### MAIN FEATURES

- Powered with a 4 hobs, 2 sets of 3.5 kW and 7.5 kW cast iron open burner.
- Fully-welded basin for hygiene.
- Cast iron pot holder with long fin to support various size of pot or pan.
- Equipped with flame failure device.
- The optimized pan diameter for 3.5 kW burner is between 240-380 mm.
- The optimized pan diameter for 7.5 kW burner is between 300-500 mm.

#### CONSTRUCTION

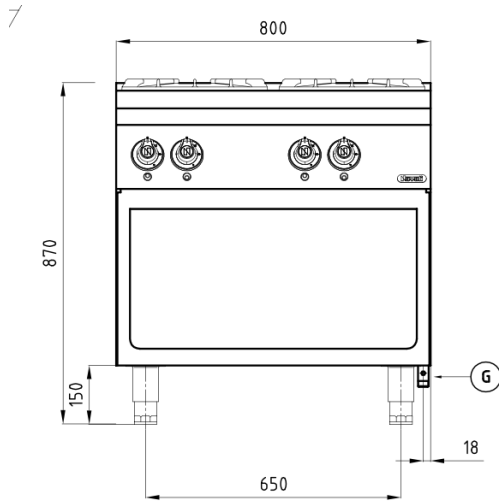
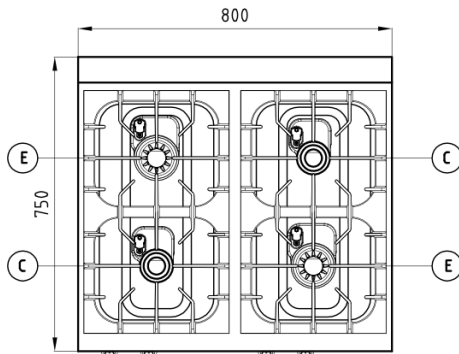
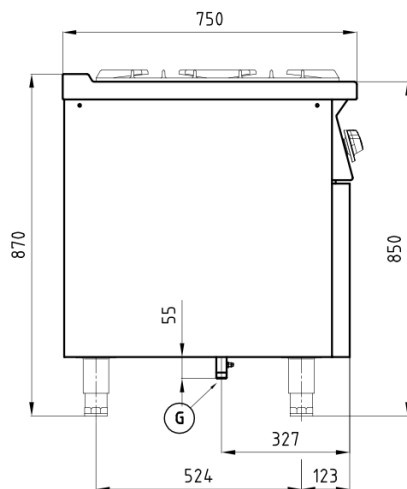
- External construction entirely with AISI 304.
- Top panel with 1.5 mm thickness. Orbital surface finishing: resistant toward scratches.
- Front panel is constructed of 0.8 mm AISI 304 with satin surface finish.
- Side panel is constructed of 0.8 mm AISI 304 with satin surface finish.
- Tubular, height adjustable (-3...+50 mm) stainless steel legs.
- Nayati connection system between Meritus products on the top panels and cabinets.
- Cabinet executed with H2 radius.
- Deep drawn front panel to minimize liquid penetration to the internal part.
- Gasket protection behind the knobs to prevent water to seeping in, prolonging main heating regulation parts.

#### INCLUDED ACCESSORIES

- G20 Conversion Kit.
- Cast iron pot holder.
- Joint clip ME1.

#### OPTIONAL ACCESSORIES

- Stainless steel pot holder ME1.
- Swing door 8-75 ME1.

**FRONT****TOP****SIDE**

\*Overall dimension in mm

**TECHNICAL DATA****External Dimensions**

Width	: 800 mm
Depth	: 750 mm
Height	: 850/870 mm

**Cooking Surface**

Cooking zones	: 2 x 305 x 620 mm
---------------	--------------------

**Gas Power Rating**

Heat input total	: LPG/Natural Gas 22 kW
No. of burners	: 4
Control type	: High - low power control
Gas type options	: LPG G30, G31 Natural Gas G20, G25

**Connections**

Gas	: DN 20 (3/4")
Water	: N/A
Drain	: N/A

**Heat & Steam Emissions**

Direct heat emission	: 5.5 kW
Latent heat emission	: 2.2 kW
Steam emission	: 3.23 kg/h

**PACKAGING DATA**

Width	: 830 mm
Depth	: 780 mm
Height	: 1020 mm
Volume	: 0.66 m <sup>3</sup>

**WEIGHT**

Net Weight	: 74 kg
Gross Weight	: 92 kg