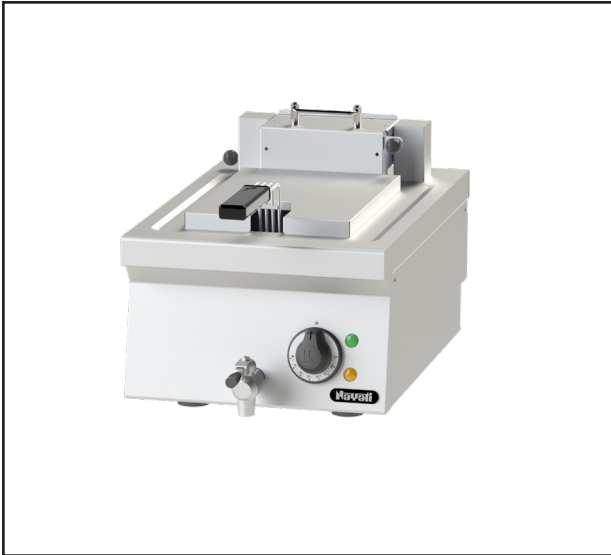


## Modular Cooking - Amicus

### Electric - Fryer

#### NEFC 4-60 (AM2)



Due to continuous technical development, the image shown may not represent the latest design of the unit.

#### DESCRIPTION

Table top electric fryer counter with 600 mm depth and 6 kW rod heater.

Usable for deep frying

Made of AISI 304 with 1.5 mm top thickness, temperature control, includes drain valve on the front surface, rod heater that can be tilted for access of cleaning of the tank.

#### OTHER AVAILABLE MODELS

- N/A

#### MAIN FEATURES

- Powered with 6 kW AISI heater
- Heater can be tilted for access of cleaning of the tank.
- Oil capacity of 8 liters
- Fully welded fryer tank.
- Drain valve with 3/4" on the front surface provided.
- Thermal-cut off when overheated.

#### CONSTRUCTION

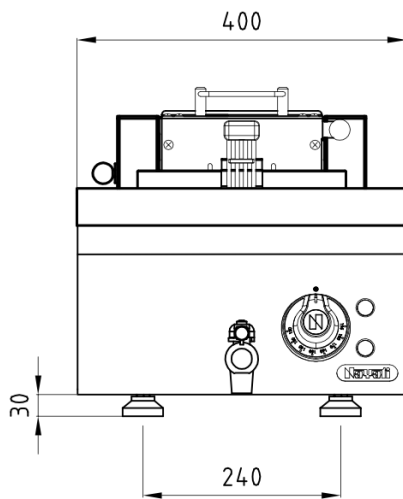
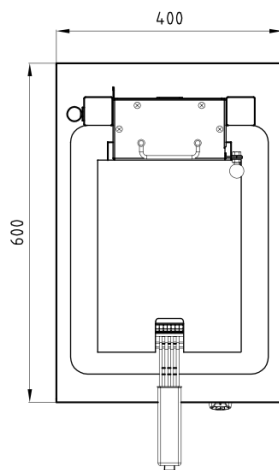
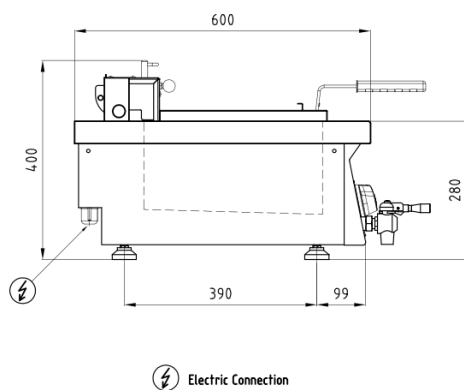
- External construction entirely with AISI 304.
- Top panel with 1.5 mm thickness. Orbital surface finishing: resistant toward scratches.
- Side panel with 0.8 mm.
- Front panel with 0.8 mm.
- Top panel with Orbital scratch-preventing finish.
- Rubber leg with 30 mm height
- IPX4 water protection level.

#### INCLUDED ACCESSORIES

- Fryer basket 200 x 280 x 100 mm.
- Tank cover and basket holder.
- Power cable, H07RN-F (5 x 2.5 mm).

#### OPTIONAL ACCESSORIES

- N/A

**FRONT****TOP****SIDE**

\*Overall dimension in mm

**TECHNICAL DATA****External Dimensions**

Width	: 400 mm
Depth	: 600 mm
Height	: 280/400 mm

**Cooking Surface**

Cooking zones	: 8 liters, 220 x 320 mm
Heating zones	: 1
Control type	: Modulating temperature control

**Electrical Supply Data**

Total connected load	: 6 kW
Voltage	: 400V, 3PNE AC /50-60Hz
Recommended fuse	: 10 A (slow)

**Connections**

Water	: N/A
Drain	: DN 20 (3/4")

**Heat & Steam Emissions**

Direct heat emission	: 0.54 kW
Latent heat emission	: 4.2 kW
Steam emission	: 6.18 kg/h

**PACKAGING DATA**

Width	: 430 mm
Depth	: 650 mm
Height	: 510 mm
Volume	: 0.15 m <sup>3</sup>

**WEIGHT**

Net Weight	: 20 kg
Gross Weight	: 24 kg